



CHASING LED COIL COVER 1563

FITS: '01-UP FUEL INJECTED SOFTAIL (DOES NOT FIT CARBURETED MOTORCYCLES)

PART#	INCLUDED
1303	1 Chasing LED Coil Cover
	1 Hardware Kit including:
	1 Dielectric Grease Park
	1 Alcohol Pad
	4 4" Cable Ties
	3 10-24 Low Crown Acorn Nuts
	2 Aluminum Spacers
	1 #10 SAE Flat Washer
	3 #10 Narrow Flat Washers
	2 1/4"-20 x 3.25 Flat Head Screws
	1 Y-Adapter
	1 Scotch Lock, male
	1 T-Tap Scotch Lock, female
	1 Controller Switch
	1 Mounting Bracket (A)
	1 Mounting Bracket (B)
	1 Installation Instructions

Please read and understand entire instructions before starting installation.

THANK YOU FOR CHOOSING KÜRYAKYN!

IN ORDER TO PROTECT YOU AND OTHERS FROM POSSIBLE INJURY AND/OR PROPERTY DAMAGE OR LOSS, PLEASE PAY CLOSE ATTENTION TO ALL INSTRUCTIONS, WARNINGS, CAUTIONS AND ATTENTION NOTES REGARDING THE USE AND CARE OF THIS PRODUCT.

WARNING! THIS INDICATION ALERTS YOU TO THE FACT THAT IGNORING THE CONTENTS DESCRIBED HEREIN CAN RESULT IN POTENTIAL DEATH OR SERIOUS INJURY.

ATTENTION! This indication alerts you to the fact that ignoring the contents described herein may negatively affect product performance and functionality.

TOOLS SUGGESTED

Set of hex wrenches, combination wrenches, phillips screwdriver, wire stripper/crimper.

STRICTLY OBSERVE THE FOLLOWING GUIDELINES IN ORDER TO USE THE PRODUCT PROPERLY AND AVOID POTENTIALLY DANGEROUS ACCIDENTS.

PROCEDURE

STEP 1 Read and understand all steps in the instructions before starting the installation. Park the motorcycle on a hard, level surface; turn off the ignition and allow the engine to cool.

-cont.-

CUSTOMER SERVICE

877.370.3604 (toll free)

INSTALLATION QUESTIONS

techsupport@kuryakyn.com or call 715.247.2983

LIMITED WARRANTY

Kuryakyn warrants that any Kuryakyn products sold hereunder, shall be free of defects in materials and workmanship for a period of one (1) year from the date of purchase by the consumer excepting the following provisions:

- Kuryakyn shall have no obligation in the event the customer is unable to provide a receipt showing the date the customer purchased the product(s).
- The product must be properly installed, maintained and operated under normal conditions.
- Kuryakyn makes no warranty, expressed or implied, with respect to any gold plated products.
- Kuryakyn shall not be liable for any consequential and incidental damages, including labor and paint, resulting from failure of a Kuryakyn product, failure to deliver, delay in delivery, delivery in nonconforming condition, or for any breach of contract or duty between Kuryakyn and a customer.
- Kuryakyn products are often intended for use in specific applications. Kuryakyn makes no warranty if a Kuryakyn product is used in applications other than intended.
- Kuryakyn electrical products are warranted for one (1) year from the date of purchase by the consumer. Components of Kuryakyn products containing L.E.D.s will be warranted for defects in materials and workmanship for 3 years from the date of purchase.
- Kuryakyn makes no warranty of any kind in regard to other manufacturer's products distributed by Kuryakyn. Kuryakyn will pass on all warranties made by the manufacturer and where possible, will expedite the claim on behalf of the customer, but ultimately, responsibility for disposition of the warranty claim lies with the manufacturer.

ABOUT OUR CATALOG

You'll find all our innovations for H-D, GL and Metric Cruisers in our annual catalogs. Order online today-select the "CATALOGS" icon. Each Kuryakyn product comes with a Proof-of-Purchase good for a complimentary catalog. Details in packaging.

Be sure to ask your local dealer about other Kuryakyn products, the motorcycle parts and accessories designed for riders by riders.

©2005 Kuryakyn USA All Rights reserved.



WARNING! YOU WILL BE WORKING AROUND THE ENGINE AND EXHAUST SYSTEM DURING INSTALLATION. ENSURE THAT THE ENGINE AND EXHAUST SYSTEM HAVE FULLY COOLED TO PREVENT INJURY.

Kuryakyn®

STEP 2 Remove the seat from the motorcycle.

STEP 3 Hold the rubber boot on the plug wire and remove the plug wires from the coil by slightly twisting and then pulling straight out. Make sure to hold the rubber boot, do not pull on the wire. (PIC.1)

STEP 4 Remove the screw from the bottom of the stock cover shown in PIC.1. This screw will be used again for style "A" coils.

STEP 5 To remove the cover, pull up on the top of the cover as shown in PIC.2 to release the plastic tab to remove the cover.

STEP 6 Refer to PIC.3 determine which ignition coil is on your motorcycle: style "A" or style "B".

STEP 7 Refer to PIC.4 and determine the correct mounting bracket for your coil.

STEP 8 Remove the screws that secure the coil. If installing style "A" the screws will be re-used.

BRACKET INSTALLATION FOR IGNITION COIL STYLE "A"

STEP 9 Place the style "A" bracket in place, secure the bracket and coil using the screws that were removed in STEP 8. (See PIC.5.)

STEP 10 Install the screw that was removed in STEP 4 in the lower arm of the bracket (PIC.4).

BRACKET INSTALLATION FOR IGNITION COIL STYLE "B"

STEP 9 Refer to PIC.6 and place the spacers in the bolt holes in the coil so that the tapered end of the spacer is facing away from the bike.

STEP 10 Place the "B" style bracket over the coil and secure the bracket and coil and secure with the (2) 1/4"-20 x 3.25 Flat Head Screws from the hardware kit.

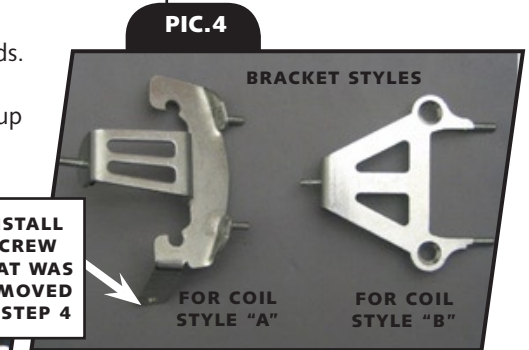
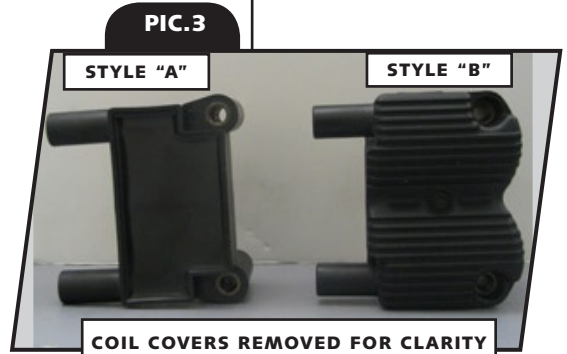
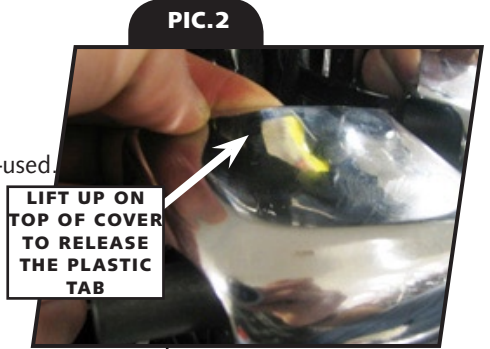
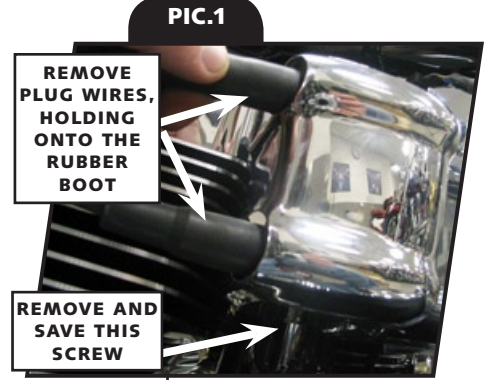
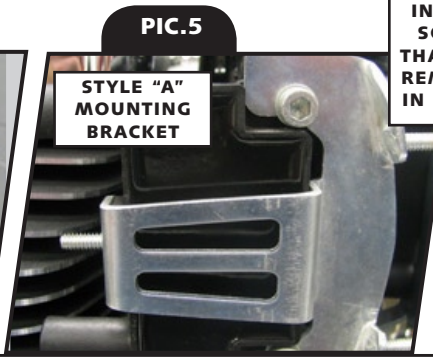
INSTALLING LED COIL COVER

STEP 11 Place the #10 SAE Flat Washer over the front stud of the mounting bracket.

STEP 12 Hold the cover at an angle and place the rear holes over the two rear bracket studs.

STEP 13 Push the front of the cover in place so that the slot in the front of the cover lines up with the front stud on the mounting bracket.

-cont.-



PAGE
2

CHASING LED COIL COVER INSTALLATION

STEP 14 Secure the cover with the (3), #10 narrow washers and 10-24 Low Crown Acorn Nuts from the hardware kit, (see [PIC.7](#)) do not over tighten.

WIRING

STEP 1 Determine a location on you bike to mount the control switch. This location needs to be close enough to the chasing LED cover so that the wiring harness from the cover will reach the wiring harness from the switch; and the power wires will reach the battery terminals.

ATTENTION! Ensure the area of installation is free of grease, oil, dirt or other debris to ensure proper adhesion. Kuryakyn WILL NOT warranty any parts lost due to improper installation.

ATTENTION! The adhesive will not bond correctly if applied at temperatures less than 50°F. Do not attempt this installation in temperatures less than 50°F.

STEP 2 Clean the mounting location with the included alcohol pad and allow the area to fully dry.

STEP 3 Using the back of your fingernail, rub the backing of the adhesive pad on the control switch to activate the catalyst. Remove the backing from the adhesive pad and press and hold the switch in place for one (1) minute. Full bonding strength will occur in 24 hours.

STEP 4 The black wire from the switch is a ground wire and needs to be secured to the negative terminal on the battery.

STEP 5 The red wire from the switch (with in-line fuse) is a power wire and needs to be secured to the positive terminal on the battery.

STEP 6 Locate the electronic fuel injection harness that is most commonly located under the seat. See [PIC.8](#).

STEP 7 Carefully expose the wires located inside the harness cover.

STEP 8 Locate either the front (blue with orange trace) or rear (yellow with blue trace) coil wire inside the harness.

NOTE Refer to an H-D electrical diagnostic manual to verify the correct wire colors for your motorcycle.

STEP 9 Place the T-Tap connector over the front or rear coil wire and close ensuring that the tab is engaged. (See [PIC.9](#).)

ATTENTION! Kuryakyn recommends the use of dielectric grease on electrical connections.

STEP 10 Insert the purple wire from the control switch into the male Scotch Lock and crimp, making sure that the wire is secure. (See [PIC.9](#).)

STEP 11 Hook the purple wire with the male Scotch Lock from the control switch to the T-Tap that was installed on the coil wire.

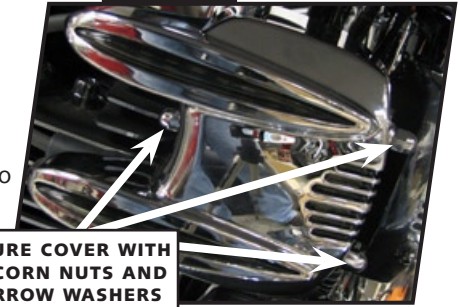
STEP 12 Plug the wiring harness from the chasing LED cover into the harness from the switch.

NOTE Use the included Y Adapter harness if using multiple SEVEN COLOR CHASING PRODUCTS on your motorcycle. One controller is capable of handling up to four units.

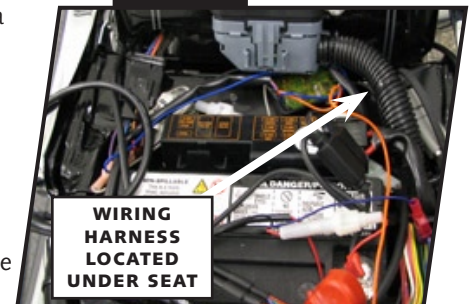
-cont.-

Kuryakyn®

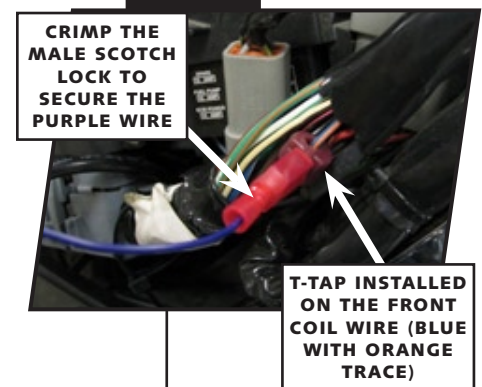
PIC.7



PIC.8



PIC.9



PAGE

3

CHASING LED COIL COVER

INSTALLATION

STEP 13 Secure all wiring away from heat sources and or moving parts using the included cable ties. Melted wire insulation may result in a short circuit.

ATTENTION! Secure all wiring away from any moving parts, pinch points or extreme heat. Küryakyn WILL NOT warranty any electrical component that fails due to pinched, crimped, broken, abraded, melted or frayed wires.

STEP 14 Reinstall the seat.

ATTENTION! It is the installer's responsibility to ensure that all of the fasteners (including pre-assembled) are tightened before operation of the motorcycle. Küryakyn will not warranty components lost due to improper installation. Periodic maintenance may be required.

Ride On!

Küryakyn®

PAGE

4

CHASING LED COIL COVER

INSTALLATION